



Mako Inc.

Sample 409-082422-175

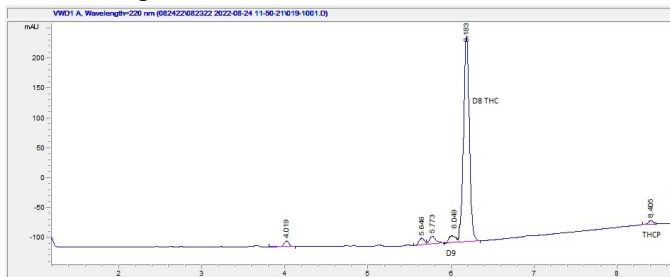
THC-P Blueberry Amnesia

Sample Submitted: 08-24-2022; Report Date: 08-24-2022

## THC-P Blueberry Amnesia

Distillate

### Chromatogram



### Cannabinoid Profile



### Cannabinoid Profile by HPLC

**0.29%**

Calculated Delta-9-THC Yield

**0.00%**

Calculated CBD Yield

**89.00%**

Total Cannabinoids

Cannabinoid	% wt	mg/g
Delta-8-THC	88.71	887.1
Delta-9-THC	0.29	2.9
<b>Total Cannabinoids</b>	<b>89.00</b>	<b>890.0</b>
<b>Calculated Delta-9-THC Yield</b>	<b>0.29</b>	<b>2.90</b>
<b>Calculated CBD Yield</b>	<b>0.00</b>	<b>0.00</b>

Calculated Maximum Delta-9-THC Yield = Delta-9-THC + 0.877 \* THCA

Calculated Maximum CBD Yield = CBD + 0.877 \* CBDA

**Notes:** THC-P: Approximated at 1.57% based on the percentage of total chromatogram

#### Marin Analytics, LLC

250 Bel Marin Keys Blvd, Suite D4  
Novato, CA 94949

415-936-6477 / sarabiancalana1@gmail.com

**Sara Biancalana**  
Chief Scientist

This sample has been tested by Marin Analytics, LLC using valid testing methodologies and a quality system. Values reported relate only to the sample tested. Marin Analytics, LLC makes no claims as to the efficacy, safety or other risks associated with any detected or non-detected levels of any compounds reported herein. This Certificate shall not be reproduced except in full, without the written approval of Marin Analytics, LLC.